

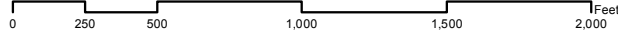
Jamestown Design Review Area



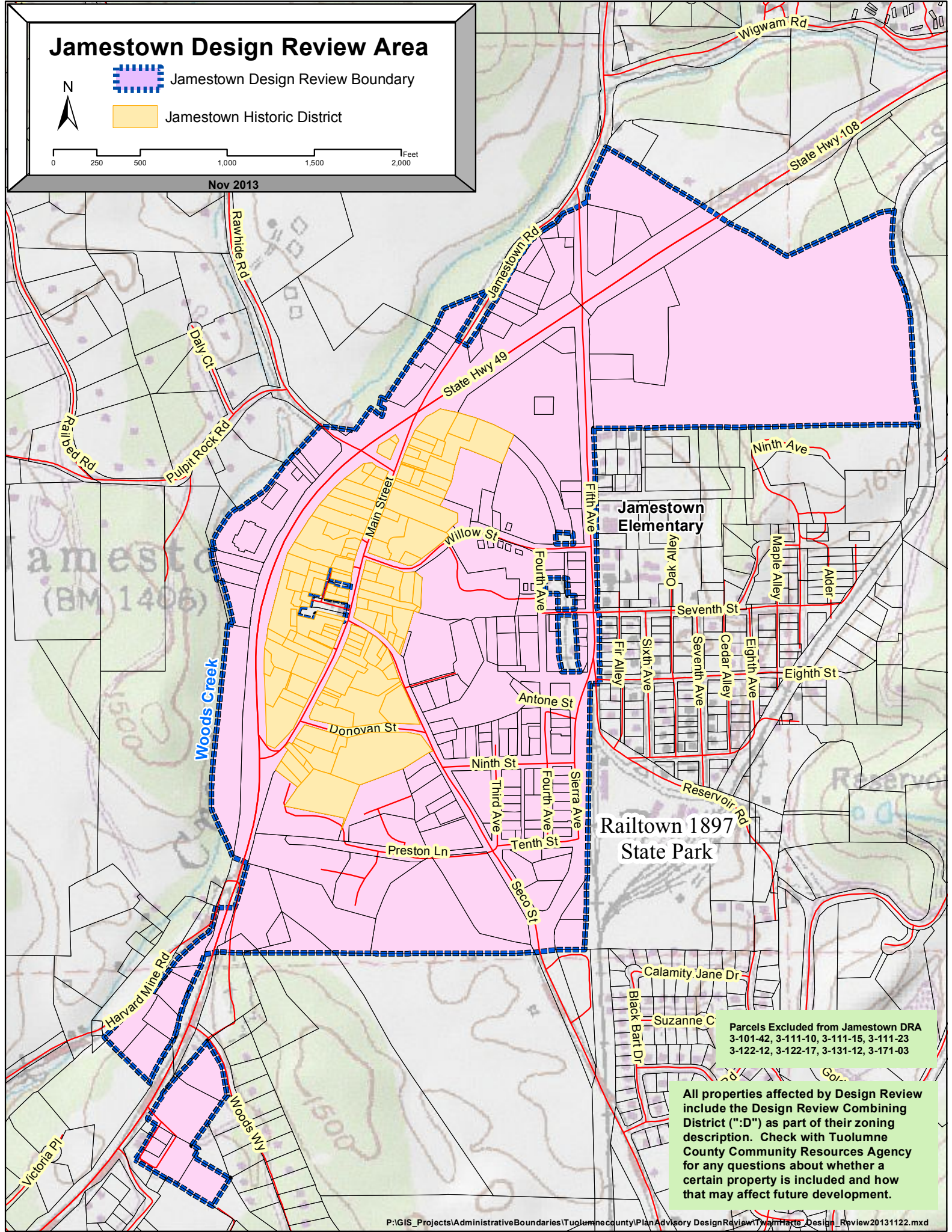
Jamestown Design Review Boundary



Jamestown Historic District



Nov 2013



Parcels Excluded from Jamestown DRA
 3-101-42, 3-111-10, 3-111-15, 3-111-23
 3-122-12, 3-122-17, 3-131-12, 3-171-03

All properties affected by Design Review include the Design Review Combining District ("D") as part of their zoning description. Check with Tuolumne County Community Resources Agency for any questions about whether a certain property is included and how that may affect future development.