




Play Audiometry – Screening Sequence



Right Ear Screening- Screener

1. Position child participant on your dominant side for screening
2. **Position** AUDIOMETER at 25 dB
3. **Give the child a block** 
4. **Turn** the switch to the **right ear**


Praise the child each time the child drops the block into the basket 

- 25 dB 4000 Hz **"Listen."** **Press tone.** Give **child** a block 
- 25 dB 2000 Hz **"Listen."** **Press tone.** Give **child** a block
- 25 dB 1000 Hz **"Listen."** **Press tone.** Give **child** a block
- If no response----Recondition at 50 dB**

Left Ear Screening - Screener

1. Switch to the **left ear**
2. Give **the child** a block

Praise the child each time the child drops the block into the basket 

- 25 dB **1000** Hz **"Listen."** **Press tone.** Give **child** a block
- 25 dB **2000** Hz **"Listen."** **Press tone.** Give **child** a block 
- 25 dB **4000** Hz **"Listen."** **Press tone.** Give **child** a block
- FINISH: Remove earphones, thank the child**


Documentation

1. Complete documentation of audiometric screening results on the audiogram
2. If child fails: (A) ^{1st} time, mark on the comment line. (B) 2 screenings 6 weeks apart, you may refer child to an eye care specialist


Play Audiometry – Screening Sequence



Right Ear Screening- Screener

1. Position child participant on your dominant side for screening
2. **Position** AUDIOMETER at 25 dB
3. **Give the child a block** 
4. **Turn** the switch to the **right ear**


Praise the child each time the child drops the block into the basket 

- 25 dB 4000 Hz **"Listen."** **Press tone.** Give **child** a block
- 25 dB 2000 Hz **"Listen."** **Press tone.** Give **child** a block 
- 25 dB 1000 Hz **"Listen."** **Press tone.** Give **child** a block
- If no response----Recondition at 50 dB**

Left Ear Screening - Screener

1. Switch to the **left ear**
2. Give **the child** a block

Praise the child each time the child drops the block into the basket 

- 25 dB **1000** Hz **"Listen."** **Press tone.** Give **child** a block
- 25 dB **2000** Hz **"Listen."** **Press tone.** Give **child** a block 
- 25 dB **4000** Hz **"Listen."** **Press tone.** Give **child** a block
- FINISH: Remove earphones, thank the child**


Documentation

1. Complete documentation of audiometric screening results on the audiogram
2. If child fails: (A) ^{1st} time, mark on the comment line. (B) 2 screenings 6 weeks apart, you may refer child to an eye care specialist


Play Audiometry – Screening Sequence



Right Ear Screening- Screener

1. Position child participant on your dominant side for screening
2. **Position** AUDIOMETER at 25 dB
3. **Give the child a block** 
4. **Turn** the switch to the **right ear**


Praise the child each time the child drops the block into the basket 

- 25 dB 4000 Hz **"Listen."** **Press tone.** Give **child** a block
- 25 dB 2000 Hz **"Listen."** **Press tone.** Give **child** a block 
- 25 dB 1000 Hz **"Listen."** **Press tone.** Give **child** a block
- If no response----Recondition at 50 dB**

Left Ear Screening - Screener

1. Switch to the **left ear**
2. Give **the child** a block

Praise the child each time the child drops the block into the basket 

- 25 dB **1000** Hz **"Listen."** **Press tone.** Give **child** a block
- 25 dB **2000** Hz **"Listen."** **Press tone.** Give **child** a block 
- 25 dB **4000** Hz **"Listen."** **Press tone.** Give **child** a block
- FINISH: Remove earphones, thank the child**


Documentation

1. Complete documentation of audiometric screening results on the audiogram
2. If child fails: (A) ^{1st} time, mark on the comment line. (B) 2 screenings 6 weeks apart, you may refer child to an eye care specialist


Play Audiometry – Screening Sequence



Right Ear Screening- Screener

1. Position child participant on your dominant side for screening
2. **Position** AUDIOMETER at 25 dB
3. **Give the child a block** 
4. **Turn** the switch to the **right ear**


Praise the child each time the child drops the block into the basket 

- 25 dB 4000 Hz **"Listen."** **Press tone.** Give **child** a block
- 25 dB 2000 Hz **"Listen."** **Press tone.** Give **child** a block 
- 25 dB 1000 Hz **"Listen."** **Press tone.** Give **child** a block
- If no response----Recondition at 50 dB**

Left Ear Screening - Screener

1. Switch to the **left ear**
2. Give **the child** a block

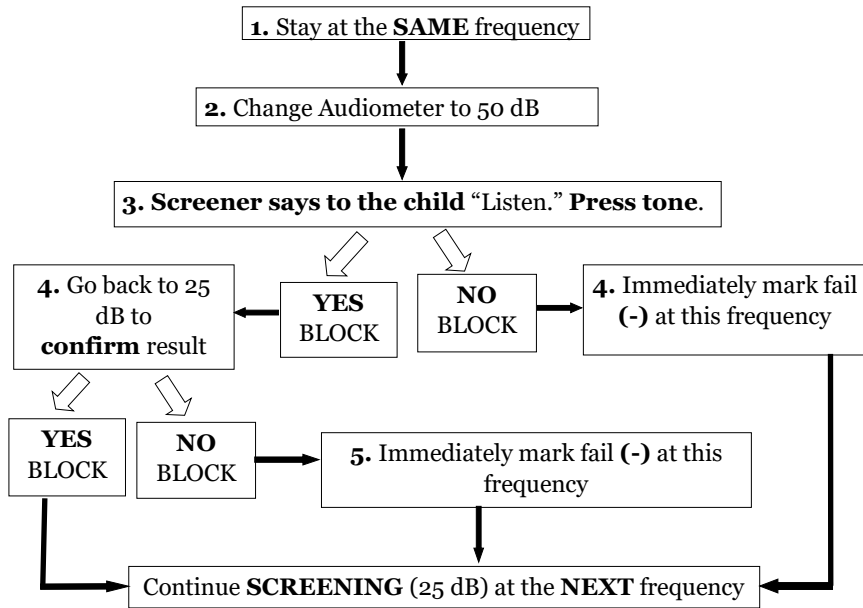
Praise the child each time the child drops the block into the basket 

- 25 dB **1000** Hz **"Listen."** **Press tone.** Give **child** a block
- 25 dB **2000** Hz **"Listen."** **Press tone.** Give **child** a block 
- 25 dB **4000** Hz **"Listen."** **Press tone.** Give **child** a block
- FINISH: Remove earphones, thank the child**

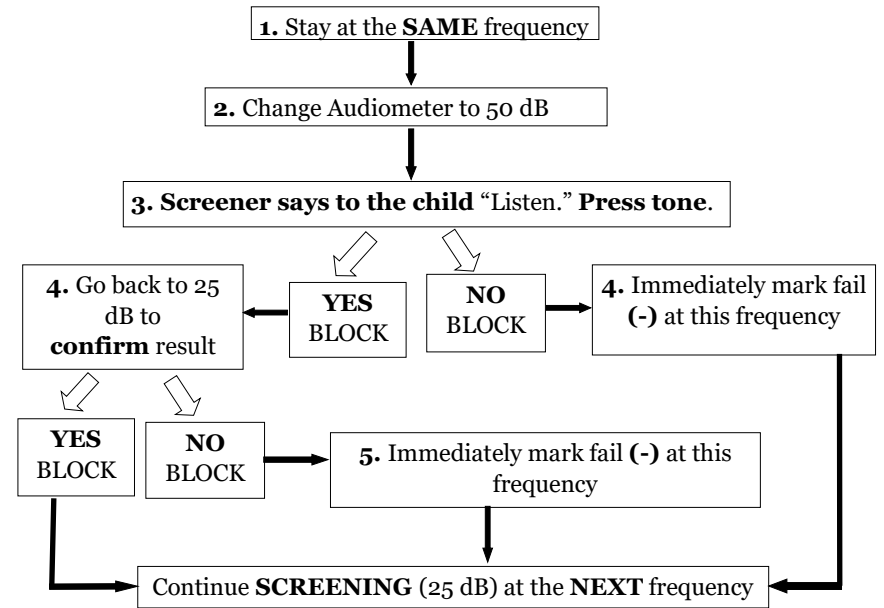
Documentation

1. Complete documentation of audiometric screening results on the audiogram
2. If child fails: (A) ^{1st} time, mark on the comment line. (B) 2 screenings 6 weeks apart, you may refer child to an eye care specialist

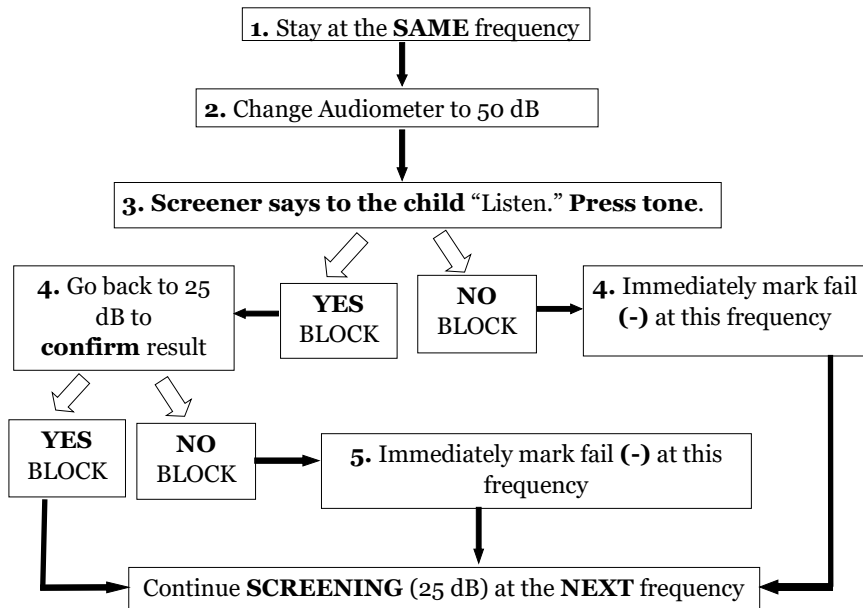
Play Audiometry—Reconditioning



Play Audiometry—Reconditioning



Play Audiometry—Reconditioning



Play Audiometry—Reconditioning

