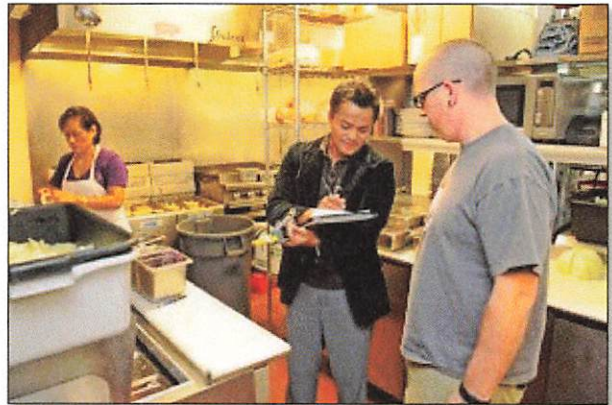


What is Environmental Health and why should I consider a career in Environmental Health?

Environmental Health focuses on the relationships between people and their environment; The field works to advance policies and programs to reduce chemical and other environmental exposures in air, water, soil, and food to protect people and provide communities with healthier environments.

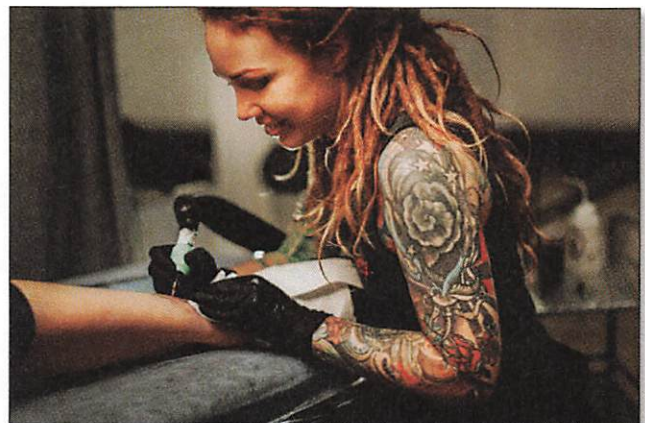
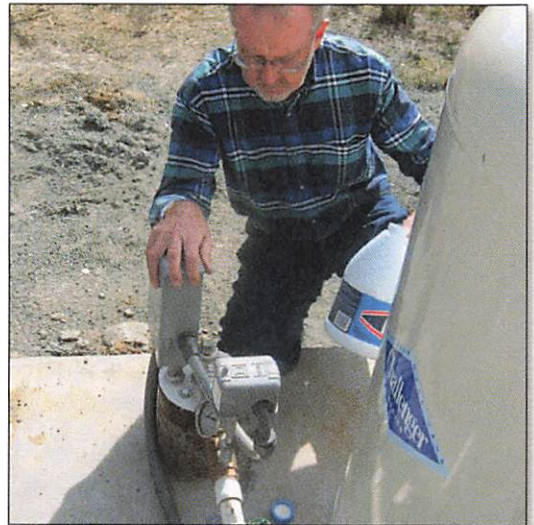


The work **combines** indoor office activities with outdoor field activities, creating an ideal work environment for many. It is impossible to predict what each day holds in store for the people who work in the Environmental Health field. **No two days are alike**, especially in smaller, rural counties. This

variety makes each both interesting and challenging.

Environmental Health positions at Tuolumne County come with full **county benefits** and opportunities for **career growth** and professional development.

For a more information on Environmental Health activities, please view the two videos on the Employment Opportunities page.



Are you interested in Environmental Health? Call the Environmental Health Director at (209) 533-5665 or send an email to bbanner@co.tuolumne.ca.us.

