

Project Contact

Blossom Scott-Heim, P.E.
County Project Engineer
(209) 533-5633
2 S. Green Street
Sonora, CA 95370
bscott-heim@co.tuolumne.ca.us

Draper Mine Road crossing Curtis Creek Bridge Replacement Project, Bridge No. 32C0028

Project No. 1333
Federal Project No. BRLO-5932(038)

Description

The proposed project consists of removal of the existing bridge, designated as Bridge 32C0028, and construction of a new bridge. Draper Mine Road will be realigned, eliminating the dangerous "S" curve in the existing road. The new alignment will be slightly northeast of the existing alignment and extend for approximately 400' on either side of the new bridge. The proposed bridge will be a precast voided concrete slab bridge.

Purpose and Need

The purpose of this project is to provide the public a safe way of travel on the bridge located on Draper Mine Road crossing Curtis Creek. The existing structure is a single span I-beam steel girder bridge with concrete abutments, and railing does not meet current acceptable standards. The existing bridge, constructed in 1937, has a sufficiency rating of 26.3 and is considered structurally deficient. This rating qualifies the bridge for replacement under the Highway Bridge Program (HBP).

Strategic Plan Goals

Remove bridge from the Eligible Bridge List (EBL) within California Department of Transportation (Caltrans), Structure Maintenance and Investigations Division and bring it up to current design standards.

Funding Sources

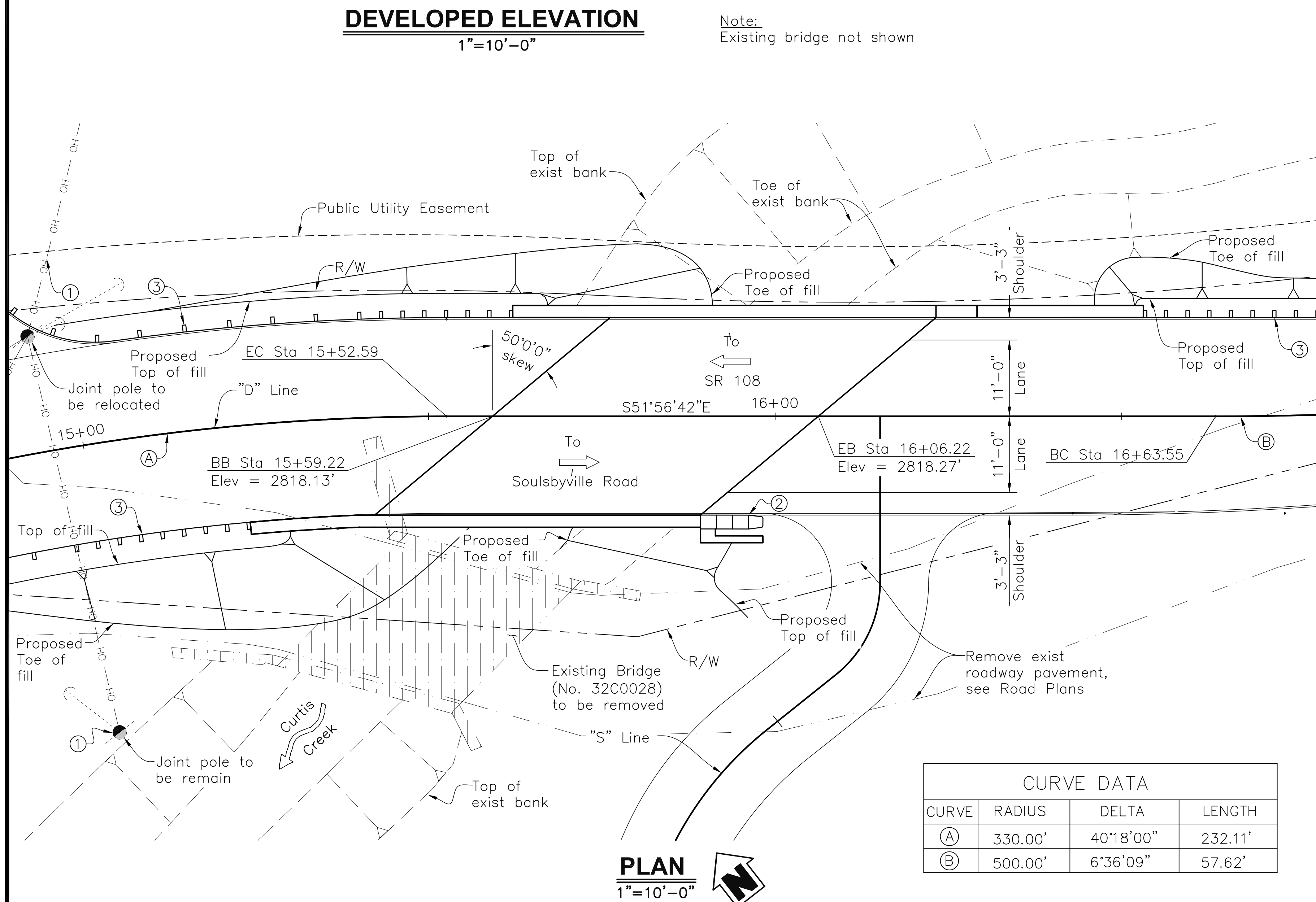
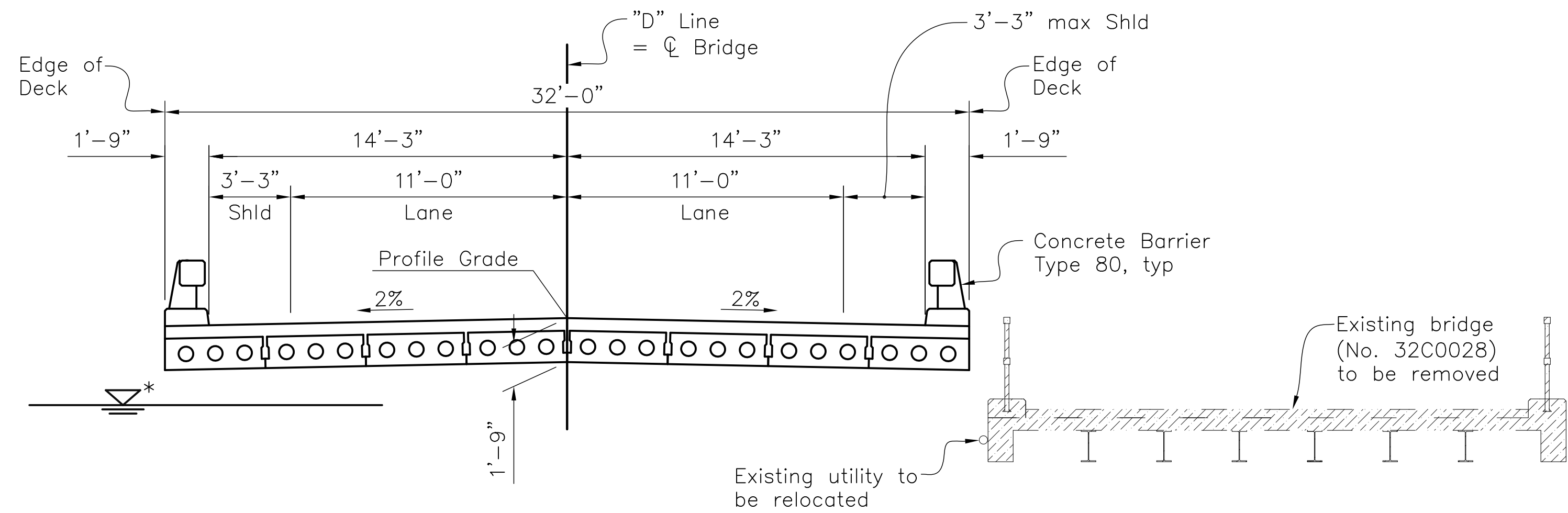
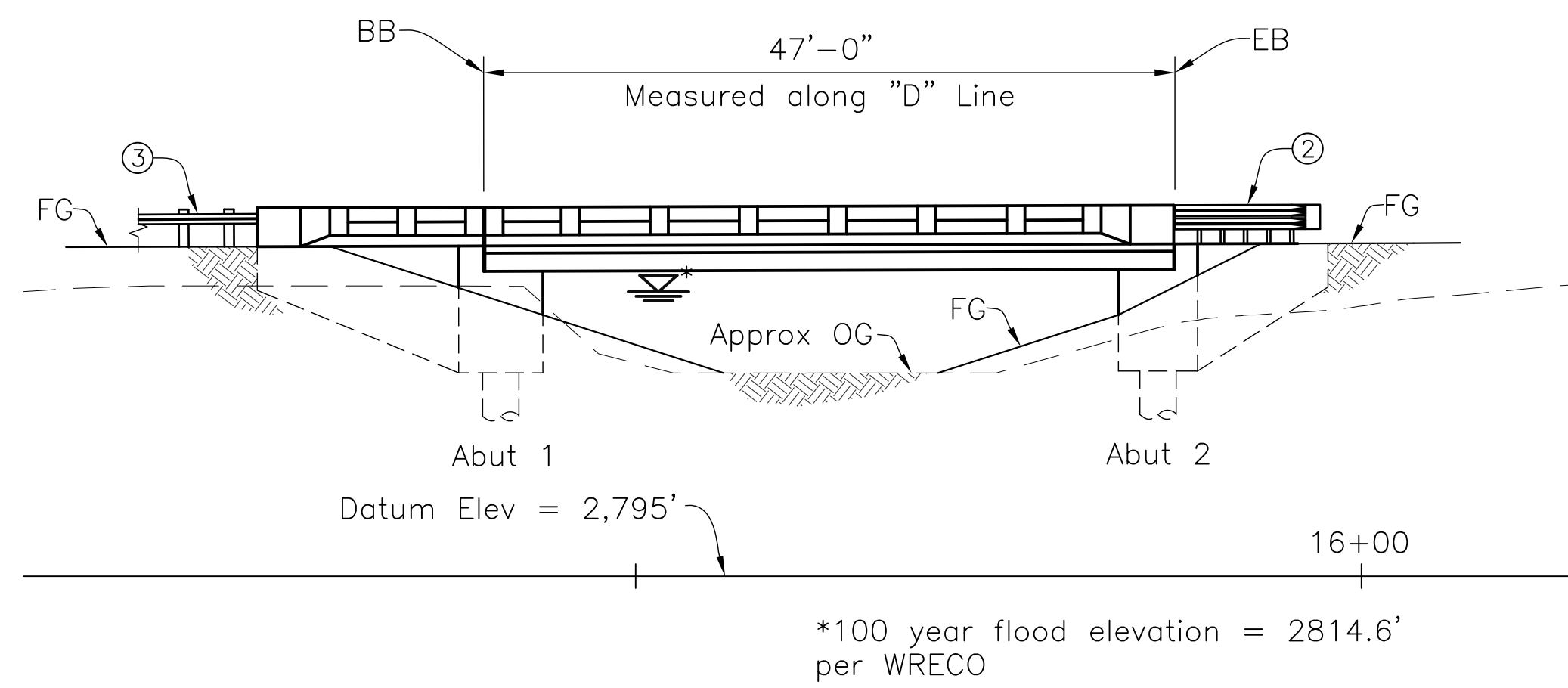
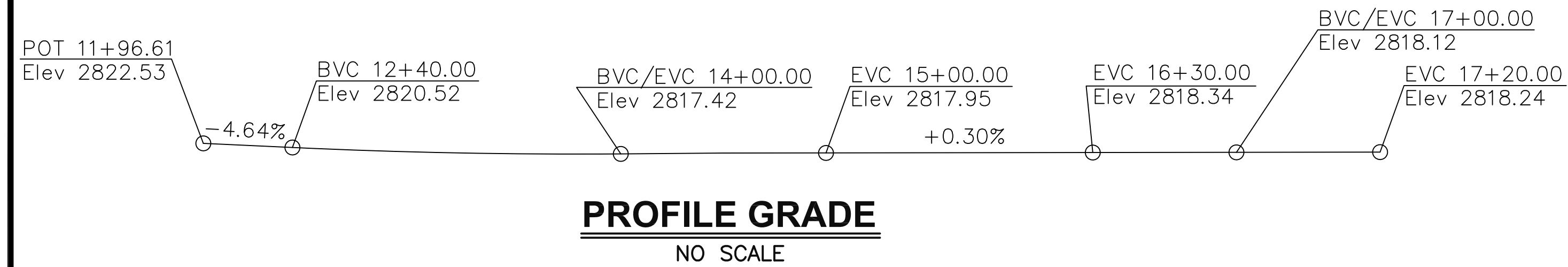
Federal Highway Administration (FHWA), Highway Bridge Program (HBP), Partial California Toll Credits, and Local funds

Total Project Cost: \$3,430,716

Current Phase

This project is currently in the right of way phase. Staff and their consultants are preparing final design for the bridge.

Anticipated Year of Construction: April 2020



| CURVE DATA | | | |
|------------|---------|-----------|---------|
| CURVE | RADIUS | DELTA | LENGTH |
| (A) | 330.00' | 40°18'00" | 232.11' |
| (B) | 500.00' | 6°36'09" | 57.62' |

TYPICAL SECTION

1/4"=1'-0"

CALTRANS 2015 STANDARD PLANS

- A3A ABBREVIATIONS (SHEET 1 OF 3)
- A3B ABBREVIATIONS (SHEET 2 OF 3)
- A3C ABBREVIATIONS (SHEET 3 OF 3)
- A10A LINES AND SYMBOLS (SHEET 1 OF 3)
- A10B LINES AND SYMBOLS (SHEET 2 OF 3)
- A10C LINES AND SYMBOLS (SHEET 3 OF 3)
- A10D LINES AND SYMBOLS (SHEET 4 OF 5)
- A10E LINES AND SYMBOLS (SHEET 5 OF 5)
- A62C LIMITS OF PAYMENT FOR EXCAVATION AND BACKFILL - BRIDGE
- RSP B0-3 BRIDGE DETAILS
- B0-13 BRIDGE DETAILS
- B6-21 JOINT SEALS (MAXIMUM MOVEMENT RATING = 2")
- B11-60 CONCRETE BARRIER TYPE 80 (SHEET 1 OF 2)
- B11-61 CONCRETE BARRIER TYPE 80 (SHEET 2 OF 2)

INDEX TO PLANS

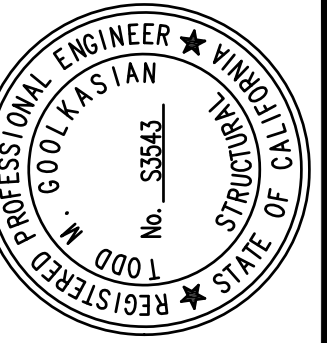
- SHEET NO.
- S1 GENERAL PLAN
 - S2 DECK CONTOURS
 - S3 FOUNDATION PLAN
 - S4 ABUTMENT LAYOUT
 - S5 ABUTMENT DETAILS No. 1
 - S6 ABUTMENT DETAILS No. 2
 - S7 ABUTMENT DETAILS No. 3
 - S8 TYPICAL SECTION
 - S9 PRESTRESSED SLAB DETAILS
 - S10 LOG OF TEST BORINGS

NOTES:

- See Road Plans for additional details, layout information, and notes.
- The contractor shall verify all existing field conditions, layout, dimensions and coordination with Road Plans prior to start of construction or ordering or fabricating any material. Any discrepancies shall be immediately brought to the attention of the Engineer.
- The contractor will be responsible for conforming to the applicable Construction Safety Orders of the Division of Industrial Safety of the State of California and OSHA requirements.
- See Road Plans for elevation control.

LEGEND

- ① Existing overhead utility line
- ② Energy absorbing barrier, see Road Plans
- ③ Midwest Guard Rail, see Road Plans
- ▨ Indicates existing bridge to be removed
- ⇒ Indicates direction of traffic
- B0-3 Indicates Caltrans standard plan sheet no.
- 3-1 Indicates detail no.



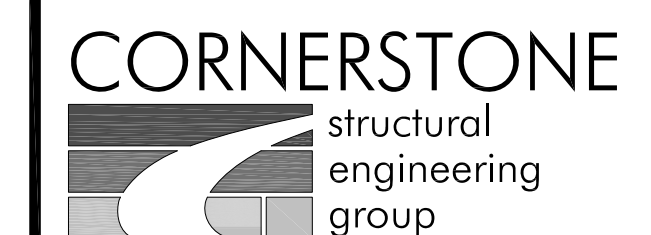
| | | | | | | | | |
|------------|---------------------------|---------------------|-----------------------|------|--------|-------|----------------------|----------|
| SIGNATURES | REGISTERED CIVIL ENGINEER | PLANS APPROVAL DATE | SUPERVISOR'S APPROVAL | DIST | COUNTY | ROUTE | POST MILE TO PROJECT | SHEET OF |
| | | | | | | | | 11 |



TUOLUMNE COUNTY
COMMUNITY RESOURCES AGENCY

GENERAL PLAN
IMPROVEMENT PLANS FOR:
DRAPER MINE ROAD BRIDGE
TUOLUMNE COUNTY, CALIFORNIA

JOB NO. 2012067A
DATE 12/20/2017
DR BY NRZ
CK BY
BRIDGE NO. 32C0028



986 W Alluvial Ave - Suite 201
Fresno, California 93711
559.320.3200
fax 559.320.3201

SHEET NUMBER
S1
OF 21 SHEETS

60% Design - NOT FOR CONSTRUCTION