

NEWBORN RESUSCITATION (P10)

Patients less than 24 hours of age.

	F	E	P	D
SUCTION - Position airway. Suction mouth & nasopharynx with bulb syringe.	X	X	X	
WARM - Dry and keep warm with thermal blanket or dry towel. Stimulate by drying vigorously including the head and back.	X	X	X	
CLAMP and CUT CORD - Leaving at least 2 inches of cord remaining.	X	X	X	
ASSESS - Evaluate breathing and heart rate. Perform APGAR score 1 and 5 minutes after delivery, if time allows. Do not delay resuscitative measures to score patient.	X	X	X	
HEART RATE > 100				
ASSESS COLOR - If peripheral cyanosis present, administer 100% oxygen via blow-by or mask.	X	X	X	
REASSESS - Heart rate and respirations every 60 seconds.	X	X	X	
HEART RATE < 100				
OXYGEN - 100% via mask	X	X	X	
STIMULATE	X	X	X	
REASSESS - If heart rate < 100 after 30 seconds of oxygen and stimulation, begin assisted ventilation with 100% oxygen via bag-valve mask, 40 - 60 breaths per minute.	X	X	X	
DEEP SUCTION - Consider deep suction if meconium present. Limit suctioning to 5 seconds per attempt.			X	
REASSESS - Heart rate and respirations every 30 seconds.	X	X	X	
HEART RATE < 60				
CPR - If no increase in heart rate following ventilations, start compressions at 120 per minute. If patient's heart rate is increasing continue ventilations without compressions for an additional 30 seconds.	X	X	X	
DEEP SUCTION - Consider deep suction if meconium present. Limit suctioning to 5 seconds per attempt.			X	
SUPRAGLOTTIC AIRWAY - If compressions and ventilations fail to increase patient's heart rate. Ventilate with 100% oxygen via BVM.			X	
EPINEPHRINE - 0.01 mg/kg of 1:10,000 IV/IO or 0.03 mg/kg of 1:10,000 ET if heart rate fails to increase above 80.			X	
REASSESS - Heart rate and respirations every 30 sec.	X	X	X	

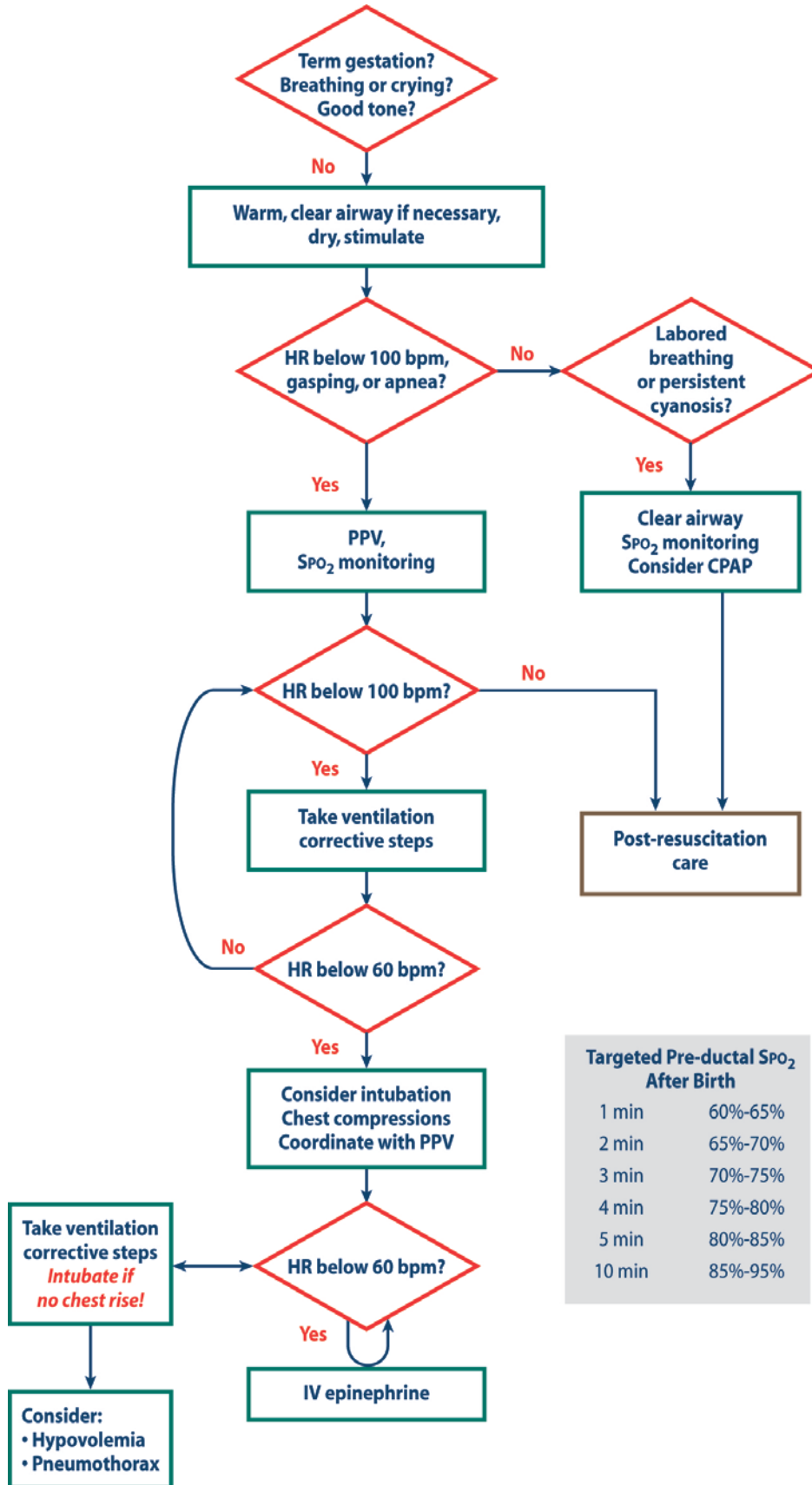
APGAR SCORE	0	1	2
APPEARANCE	Blue	Pink Body/Blue Limbs	All Pink
PULSE	Absent	< 100/Min	>100/Min
GRIMACE	None	Grimace	Cough/Sneeze
ACTIVITY	Limp	Some Flexion	Active Motion
RESPIRATIONS	Absent	Slow/Irregular	Good

Provider Key

F = First Responder
P = Paramedic

E = EMT
D = Base Hospital Physician Order Required

NEWBORN RESUSCITATION ALGORITHM SUMMARY



Targeted Pre-ductal SpO ₂ After Birth	
1 min	60%-65%
2 min	65%-70%
3 min	70%-75%
4 min	75%-80%
5 min	80%-85%
10 min	85%-95%